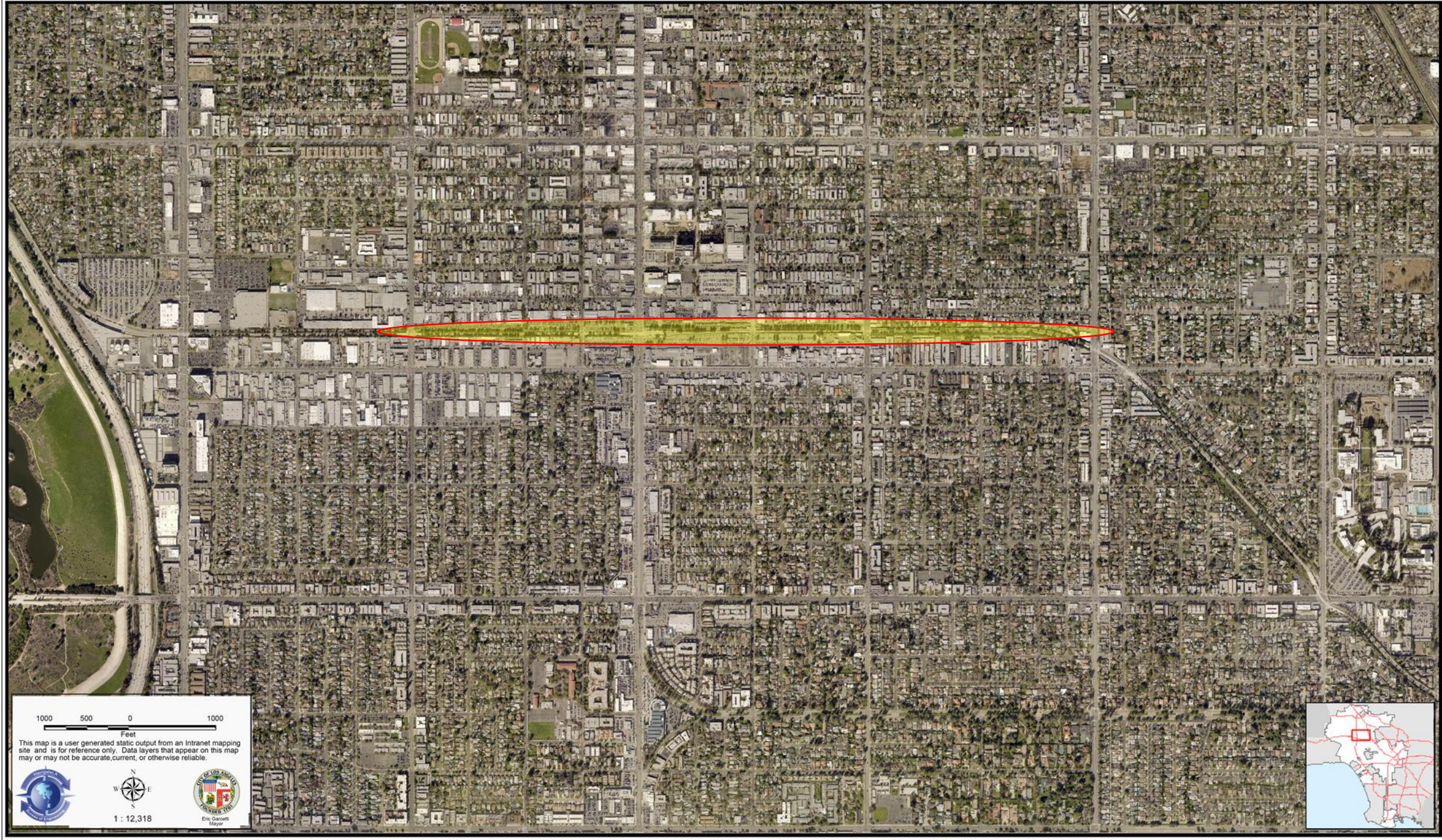




NavigateLA Map



Project Area

April 8, 2021



Safe, Clean Water Program  
Metro Orange Line Water Infiltration and Quality Project  
**StormTunnel Alternative**



**DIVERSIONS**  
Six Nos,

ACCESS

**SUMP**  
6 Nos.

**TUNNEL**  
12' ID  
7,950 LF,  
20.6 AF Vol.:  
19.35 AF Detention  
1.25 AF Retention

**DRYWELLS**  
90 Nos,  
73.3 cfs Infil. Capacity  
0.3 AF Detention Vol.

**Single Event Design Storm:**  
**Annual Stormwater Capture:**

85th P. 24-hr Strom, 203 cfs Peak Flow, 114.5 AF Volume  
1,094 AF/YR (10-Year Modeling Average)

Proposed System				01 G										
	Metro Orange Line Water Infiltration & Quality Project <b>StormTunnel Alternative</b>	<table border="1"> <thead> <tr> <th>MM/DD/YY</th> <th>REMARKS</th> </tr> </thead> <tbody> <tr><td>1</td><td>...</td></tr> <tr><td>2</td><td>...</td></tr> <tr><td>3</td><td>...</td></tr> <tr><td>4</td><td>...</td></tr> <tr><td>5</td><td>...</td></tr> </tbody> </table>	MM/DD/YY		REMARKS	1	...	2	...	3	...	4	...	5
MM/DD/YY	REMARKS													
1	...													
2	...													
3	...													
4	...													
5	...													

## INDEX OF DRAWINGS

A1	Plan
A2	Plan and Profile
A3	Plan 1 of 7
A4	Plan 2 of 7
A5	Plan 3 of 7
A6	Plan 4 of 7
A7	Plan 5 of 7
A8	Plan 6 of 7
A9	Plan 7 of 7
A10	Drywell Detail
A11	Riser and Sump Detail
A12	Diversion Perspective
A13	Diversion Structure Details
A14	Modeling Results - 85th P. 24-Hr Storm
A15	Modeling Results - Daily and Annual Capture

## SCOPE OF WORK

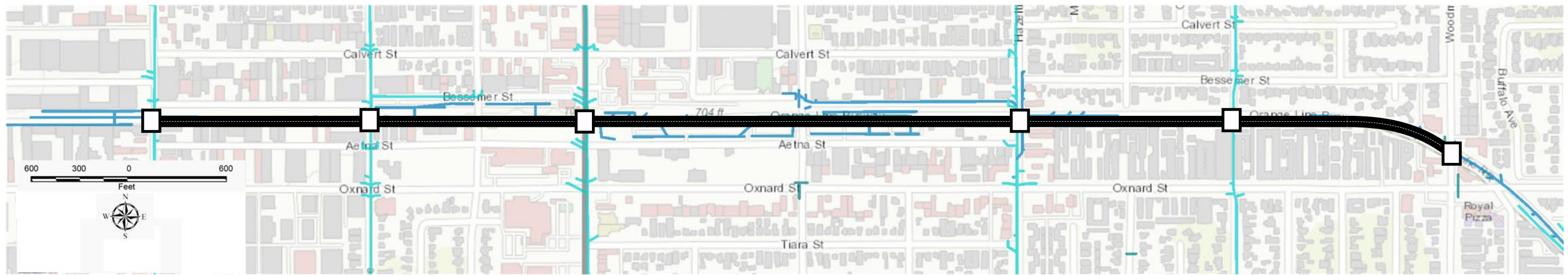
Item	Description	Unit	Quantity	Drawings
1	<b>Tunnel</b> - 12' ID with segmental concrete liners	LF	7,950	A1-A9
2	<b>Drywells</b> - 4' D x 30' deep drilled shaft with gravel backfill, embedded in tunnel below invert @ 50-ft spacing with 6' D surface access	EA	90	A1, A10
3	<b>Diversion</b> - Concrete box with MH access and trash screen and connection CRP piping	EA	6	A12, A13
4	<b>Sump</b> - 4' D x 3' deep concrete shaft below tunnel invert with 6' D surface access	EA	6	A12, A13

### TRADE SECRETS NOTICE: ALL RIGHTS RESERVED

This document constitutes intellectual property of SEITec, a California corporation, embodying substantial creative efforts, ideas and expressions. It may be distributed and used for informing others and for funding application of the project for which it is intended. The ideas, expressions, concepts, and solutions disclosed in this document may not be further developed to prepare design plans, details, solicitations, or bid documents or implemented in any shape or form or by any means, electronic, physical, or otherwise, without explicit written permission from SEITec.

COPYRIGHT NOTICE: COPYRIGHT (C) 2021  
by SEITec. All rights reserved.  
An unpublished work.

Index and Scope	<b>SEITec</b>	MM/DD/YY	REMARKS	02
	Metro Orange Line Water Infiltration & Quality Project <b>StormTunnel Alternative</b>	1 ---/---/---	...	
		2 ---/---/---	...	G
		3 ---/---/---	...	
		4 ---/---/---	...	
		5 ---/---/---	...	



**MOL 1**  
Kester Ave.

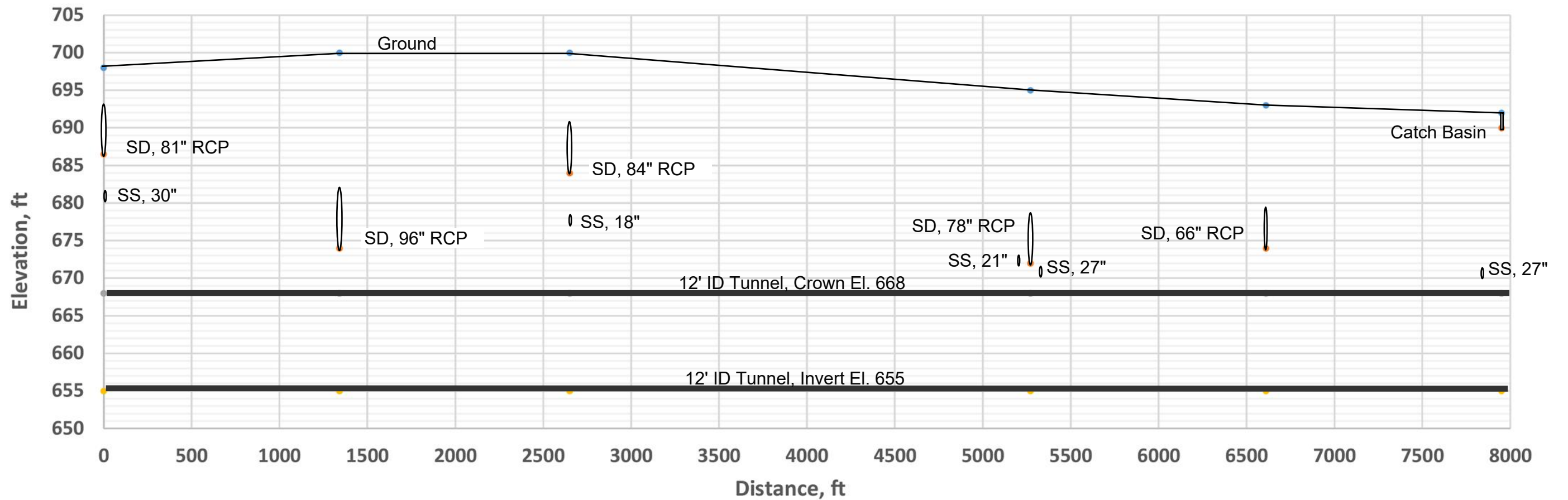
**MOL 2**  
Cedros Ave

**MOL 3**  
Van Nuys Blvd

**MOL 4**  
Hazeltine Ave

**MOL 5**  
Ranchito Ave

**MOL 6**  
Woodman Ave

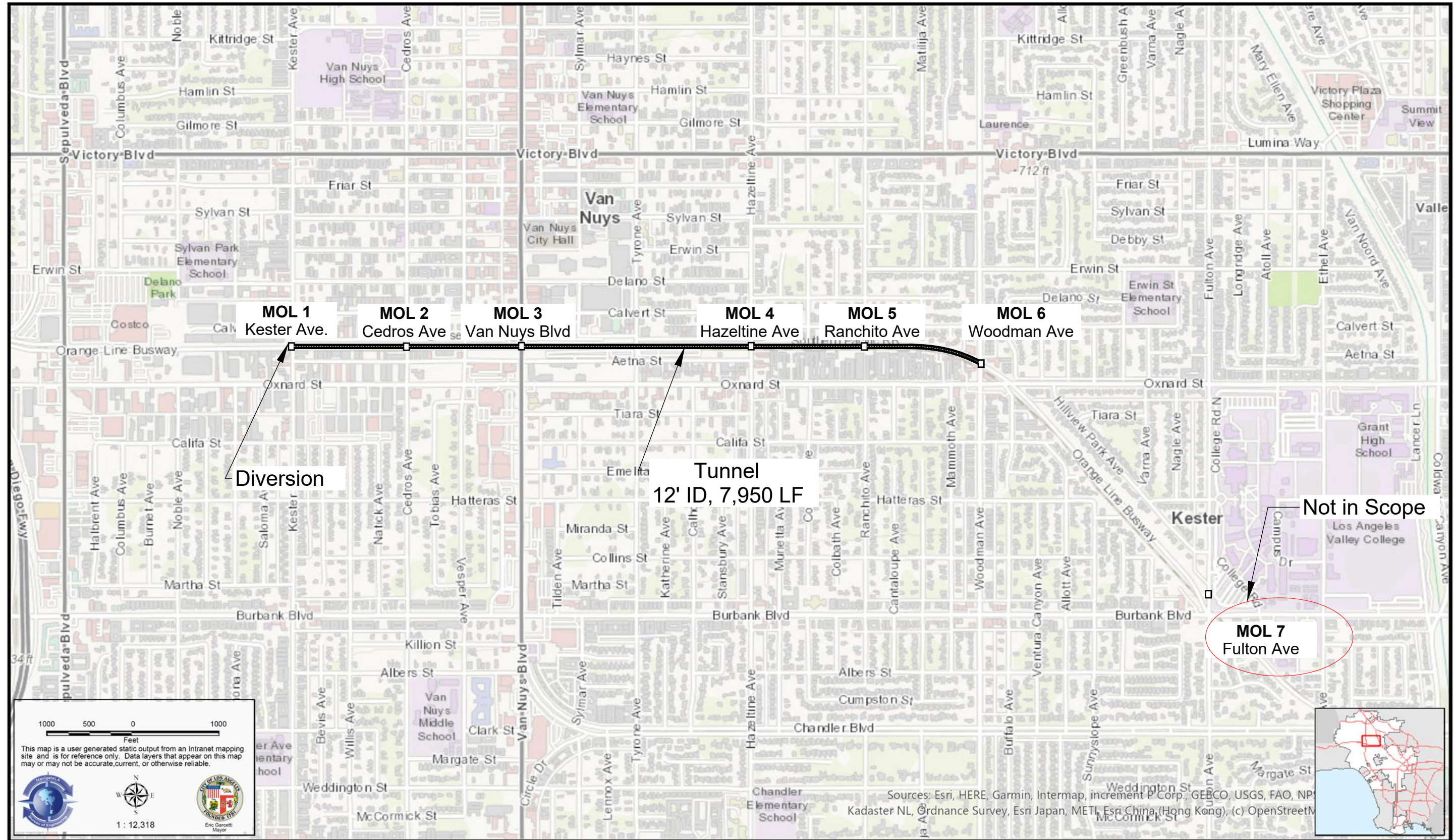


Tunnel Plan and Profile



Metro Orange Line Water Infiltration & Quality Project  
**StormTunnel Alternative**

MM/DD/YY	REMARKS
1	...
2	...
3	...
4	...
5	...



1000 500 0 1000  
Feet

This map is a user generated static output from an Intranet mapping site and is for reference only. Data layers that appear on this map may or may not be accurate, current, or otherwise reliable.

1 : 12,318

Sources: Esri, HERE, Garmin, Intermap, increment P Corp., GEBCO, USGS, FAO, NPS, Kadaster NL, Ordnance Survey, Esri Japan, METI, Esri China, (Hong Kong), (c) OpenStreetMap

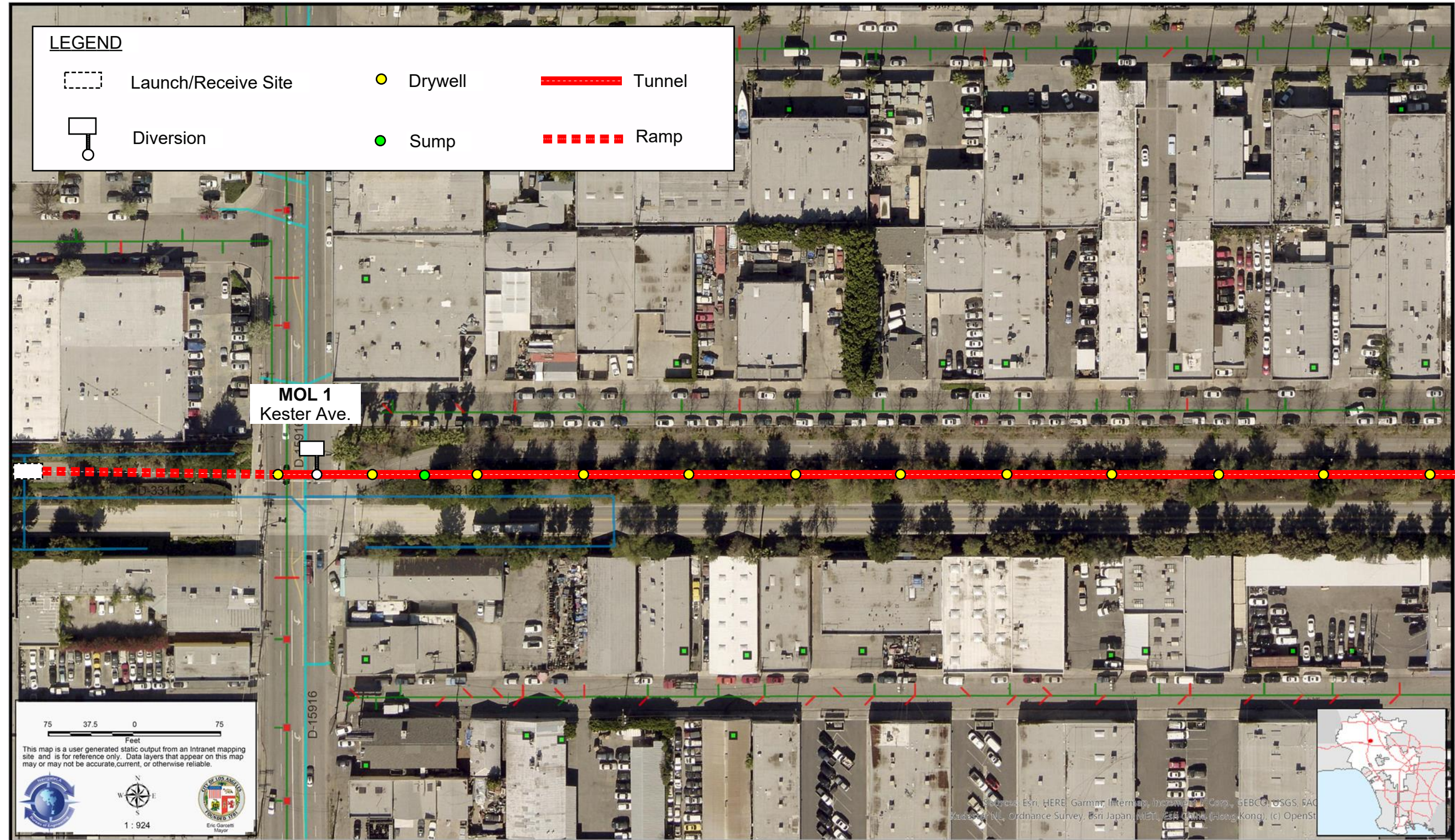
Overall Plan



Metro Orange Line Water Infiltration & Quality Project  
StormTunnel Alternative

MM/DD/YY	REMARKS
1	...
2	...
3	...
4	...
5	...

01  
A

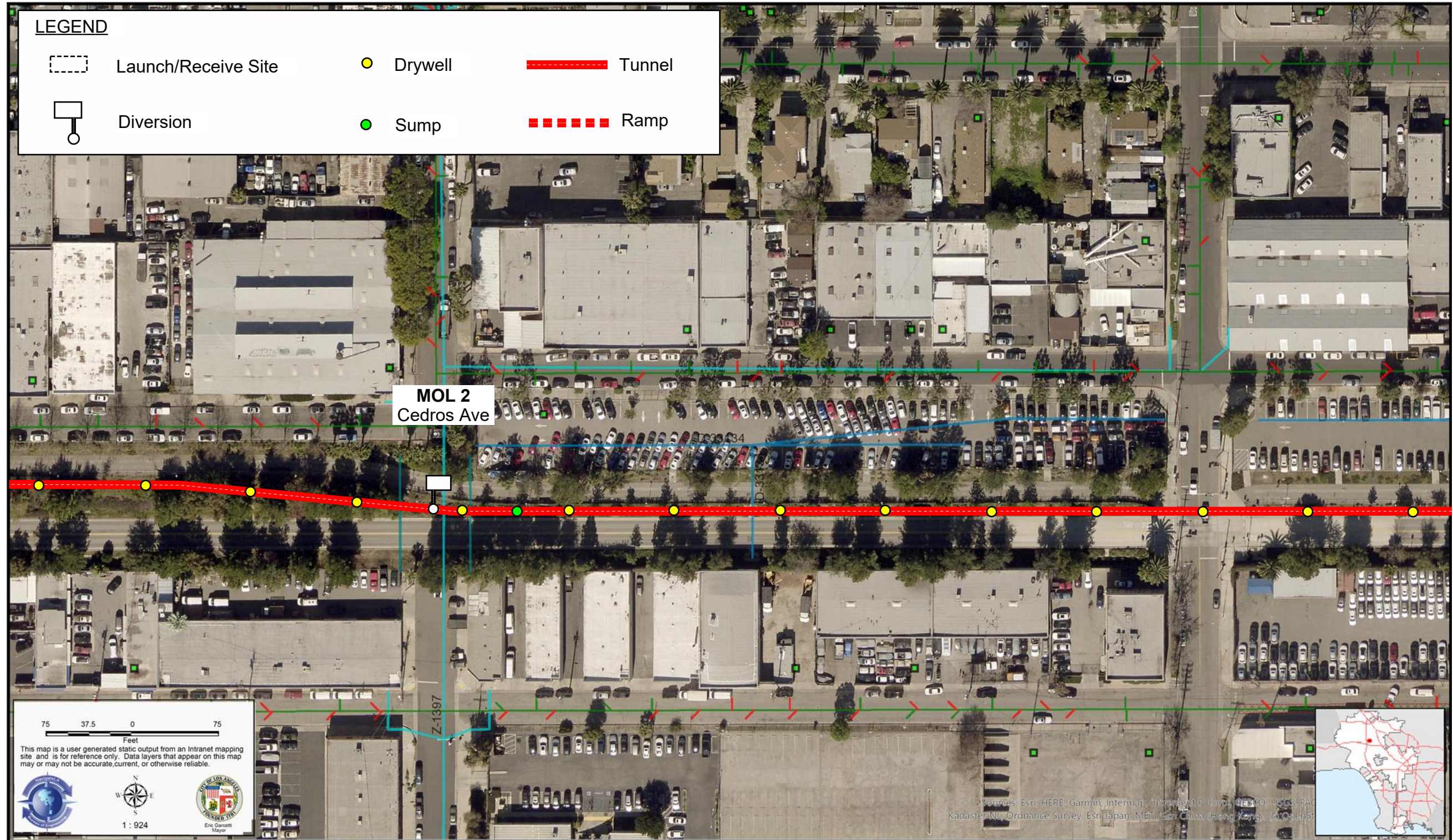


StormTunnel Plan 1 of 7



Metro Orange Line Water Infiltration & Quality Project  
StormTunnel Alternative

MM/DD/YY	REMARKS
1	...
2	...
3	...
4	...
5	...

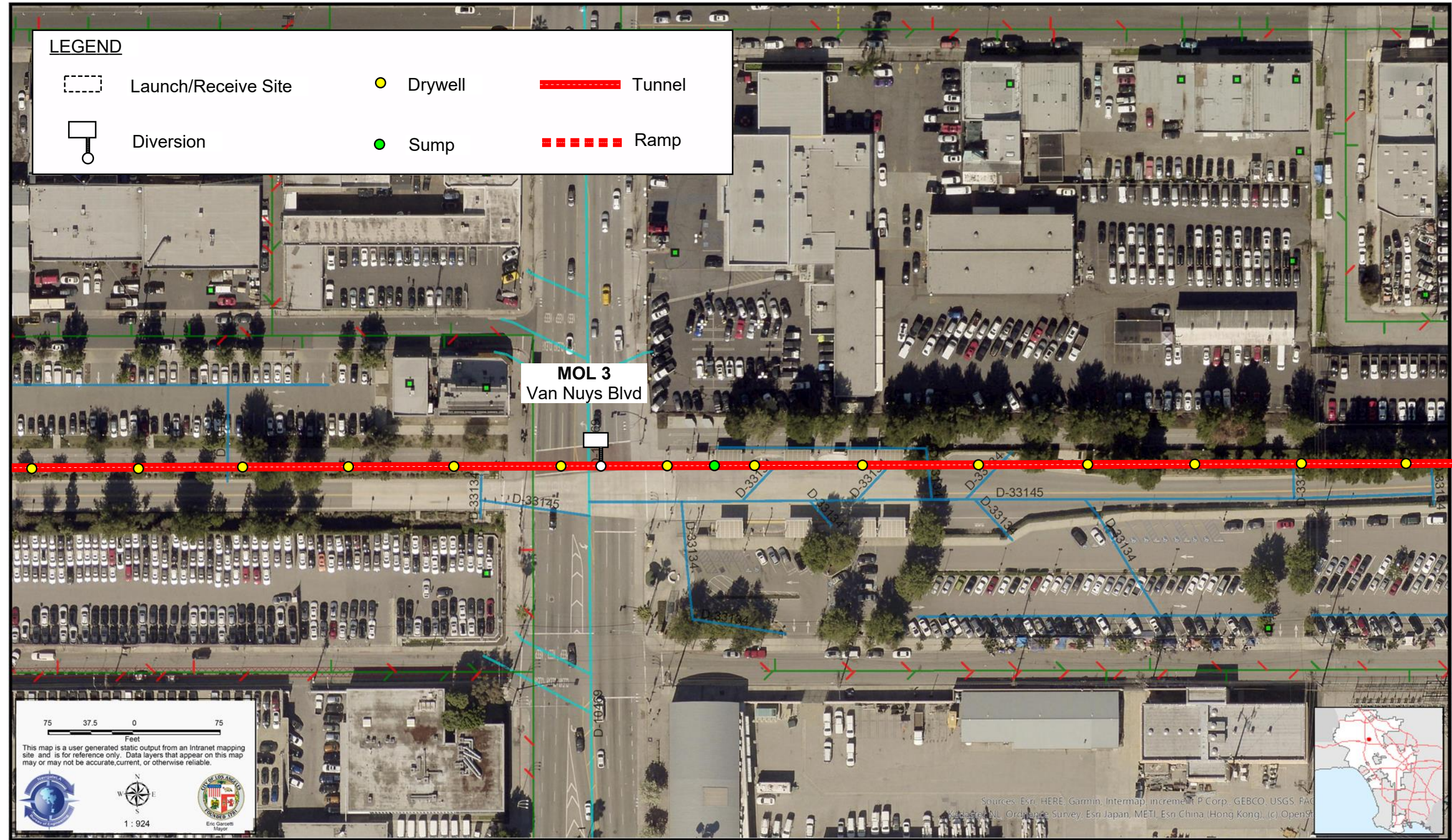


StormTunnel Plan 2 of 7



Metro Orange Line Water Infiltration & Quality Project  
StormTunnel Alternative

MM/DD/YY	REMARKS
1	...
2	...
3	...
4	...
5	...



StormTunnel Plan 3 of 7



Metro Orange Line Water Infiltration & Quality Project  
StormTunnel Alternative

MM/DD/YY	REMARKS
1	
2	
3	
4	
5	



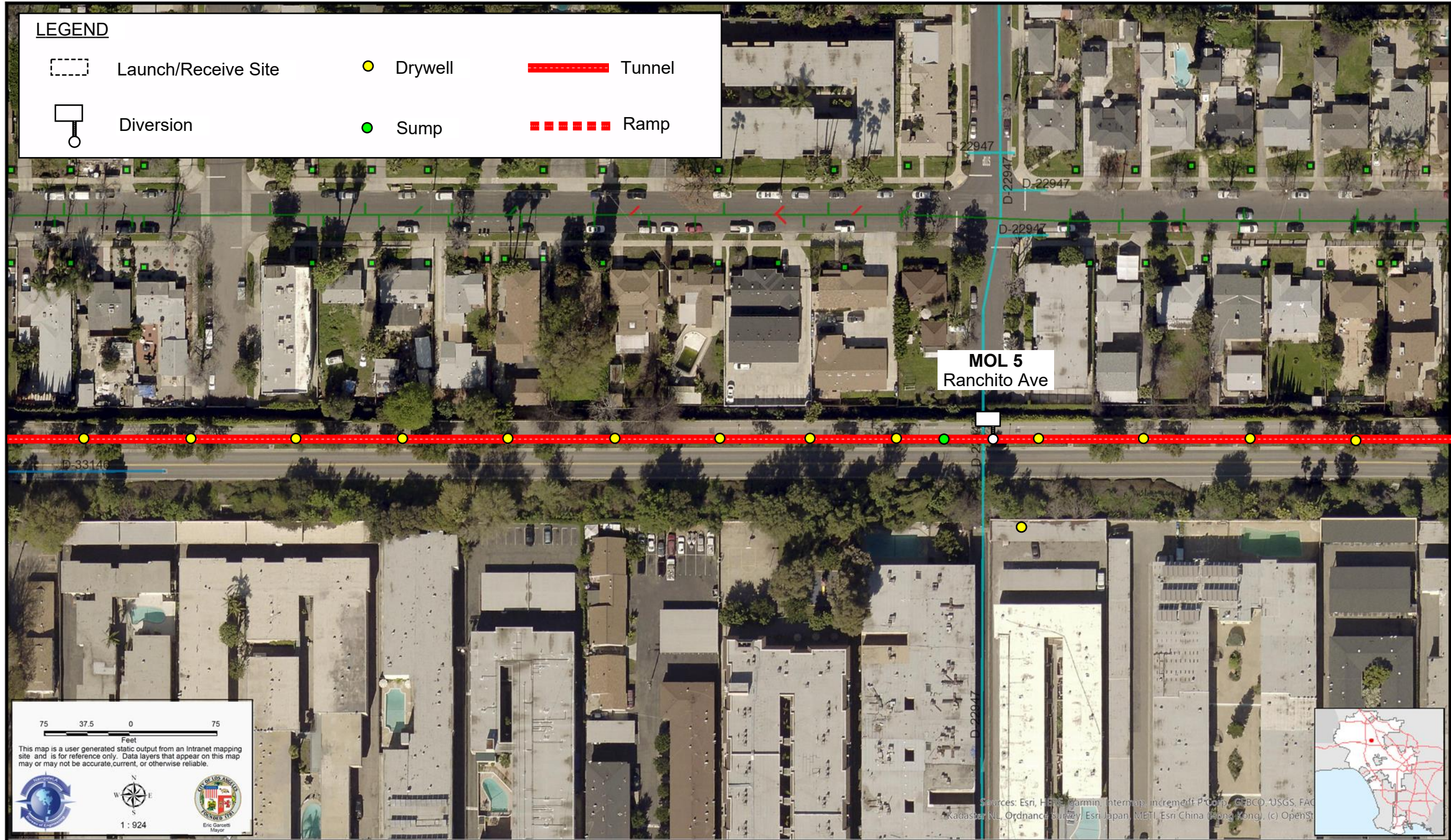


StormTunnel Plan 4 of 7



Metro Orange Line Water Infiltration & Quality Project  
**StormTunnel Alternative**

MM/DD/YY	REMARKS
1	...
2	...
3	...
4	...
5	...



StormTunnel Plan 5 of 7



Metro Orange Line Water Infiltration & Quality Project  
StormTunnel Alternative

MM/DD/YY	REMARKS
1	...
2	...
3	...
4	...
5	...

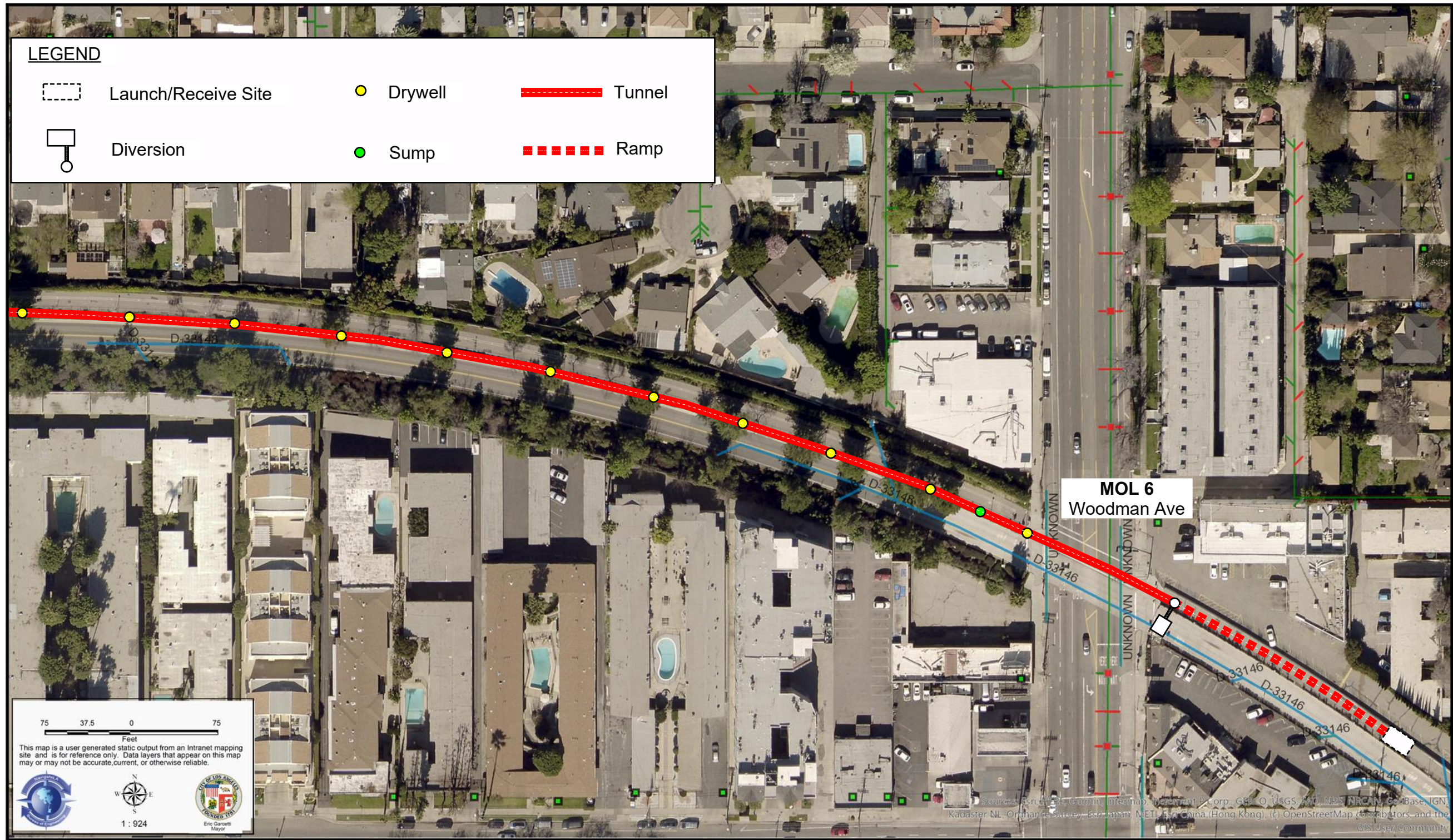


StormTunnel Plan 6 of 7



Metro Orange Line Water Infiltration & Quality Project  
**StormTunnel Alternative**

MM/DD/YY	REMARKS
1	...
2	...
3	...
4	...
5	...



**LEGEND**

	Launch/Receive Site		Drywell		Tunnel
	Diversion		Sump		Ramp

75 37.5 0 75  
Feet

This map is a user generated static output from an Intranet mapping site and is for reference only. Data layers that appear on this map may or may not be accurate, current, or otherwise reliable.

1 : 924  
Eric Garcetti Mayor

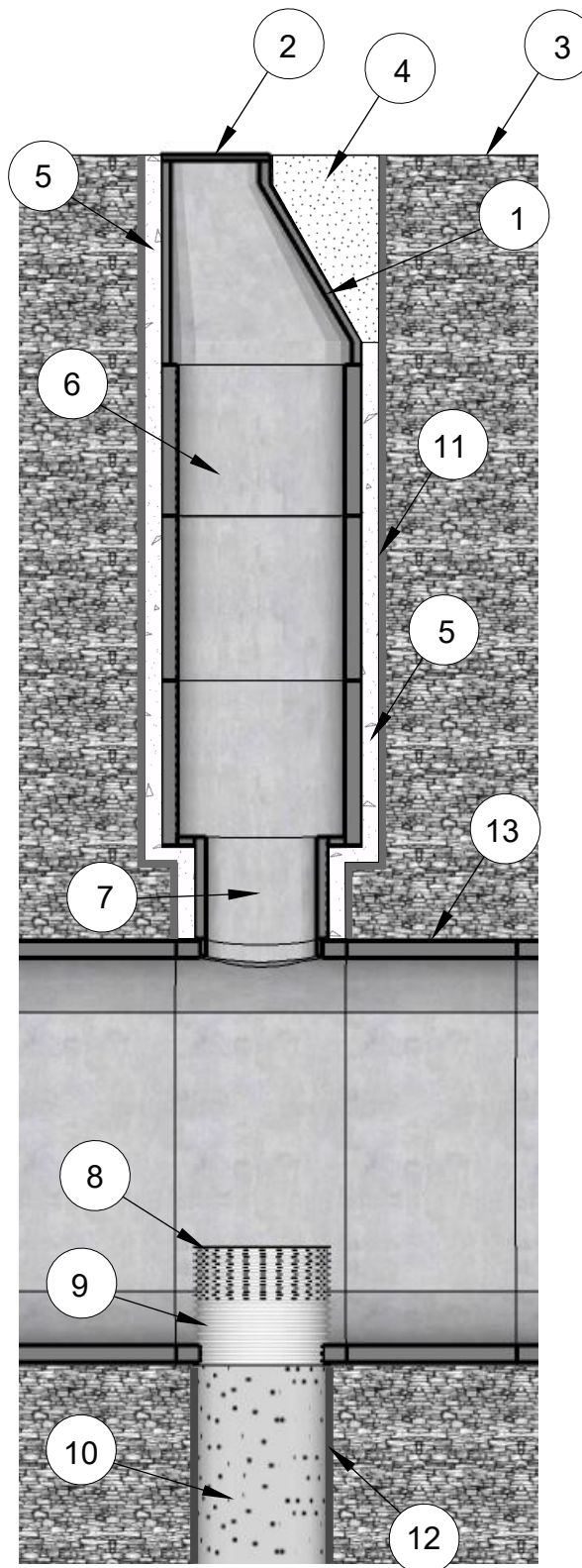
StormTunnel Plan 7 of 7



Metro Orange Line Water Infiltration & Quality Project  
StormTunnel Alternative

MM/DD/YY	REMARKS
1	...
2	...
3	...
4	...
5	...

- ITEM NUMBERS
1. 60" ID Precast Manhole Cone
  2. Bolted Ring & Cover
  3. Final Grade
  4. Compacted Backfill
  5. Poured Concrete
  6. 60" ID Precast Manhole Shaft
  7. 48" OD Precast Pipe Connector to Tunnel
  8. 48" OD Slotted Corrugated HDPE Pipe, Min. 18" Tall with Filter Fabric Cover
  9. 48" OD Corrugated HDPE Pipe, 18" above Tunnel Invert
  10. Crushed Rock 3/8" and 1-1/2" per Native Soil
  11. 72" Diam. Drilled Shaft
  12. 48" Diam. Drilled Shaft, 75' Deep
  13. Tunnel Liner Segment, 5-ft W, 12-ft ID

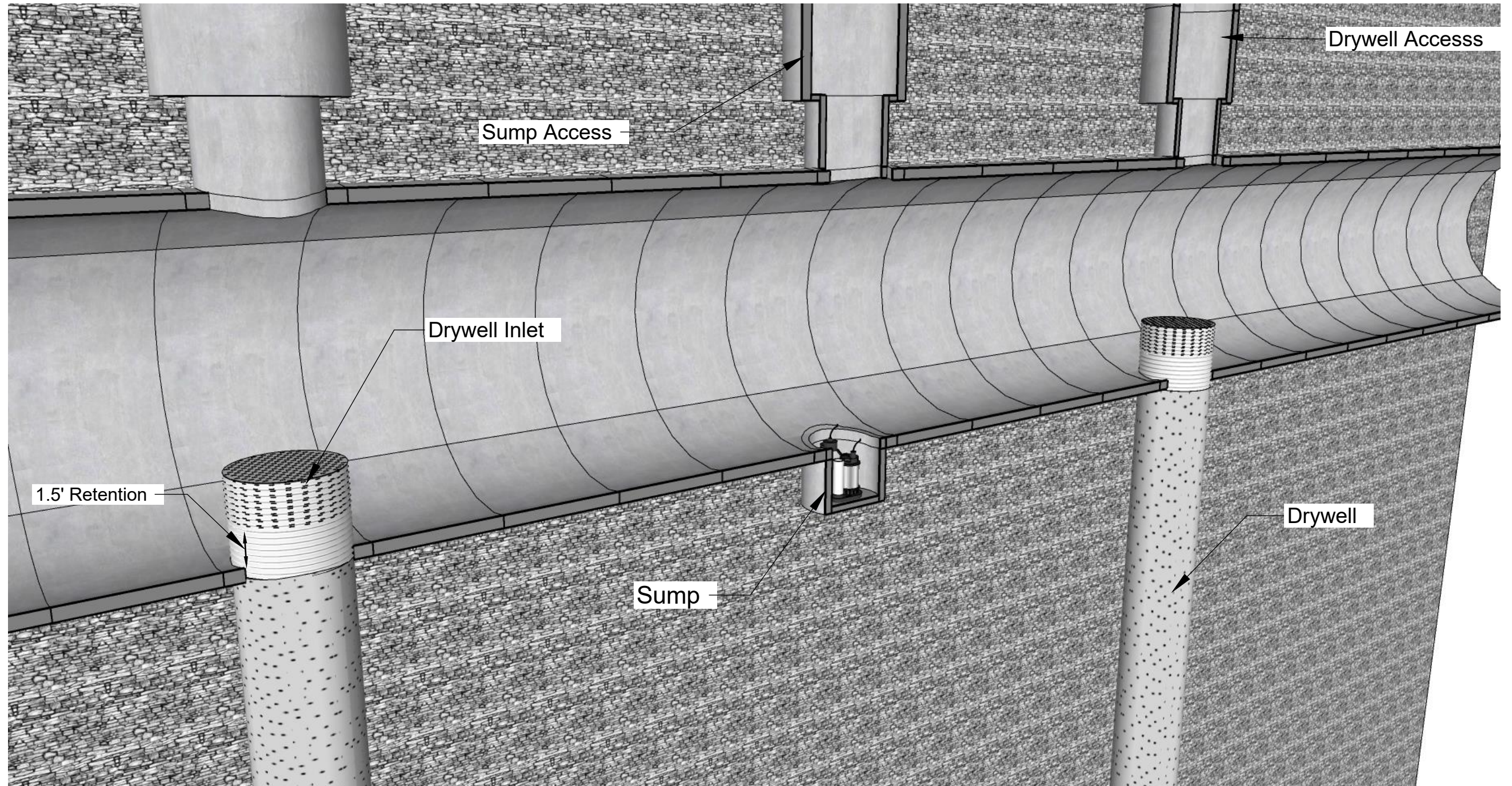


Drywell Detail



Metro Orange Line Water Infiltration & Quality Project  
**StormTunnel Alternative**

MM/DD/YY	REMARKS
1	...
2	...
3	...
4	...
5	...

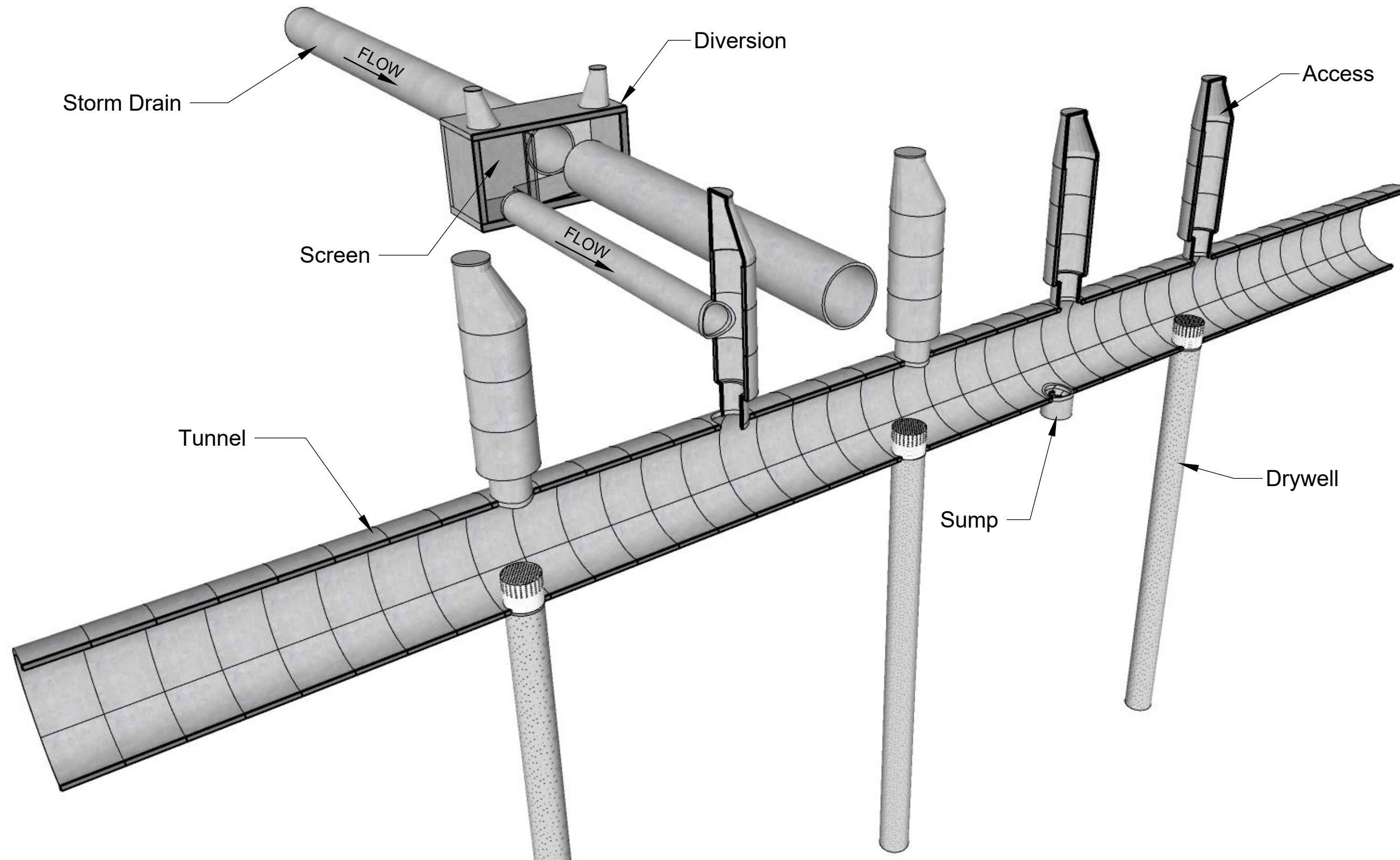


Detail - Sumps



Metro Orange Line Water Infiltration & Quality Project  
**StormTunnel Alternative**

MM/DD/YY	REMARKS
1	...
2	...
3	...
4	...
5	...

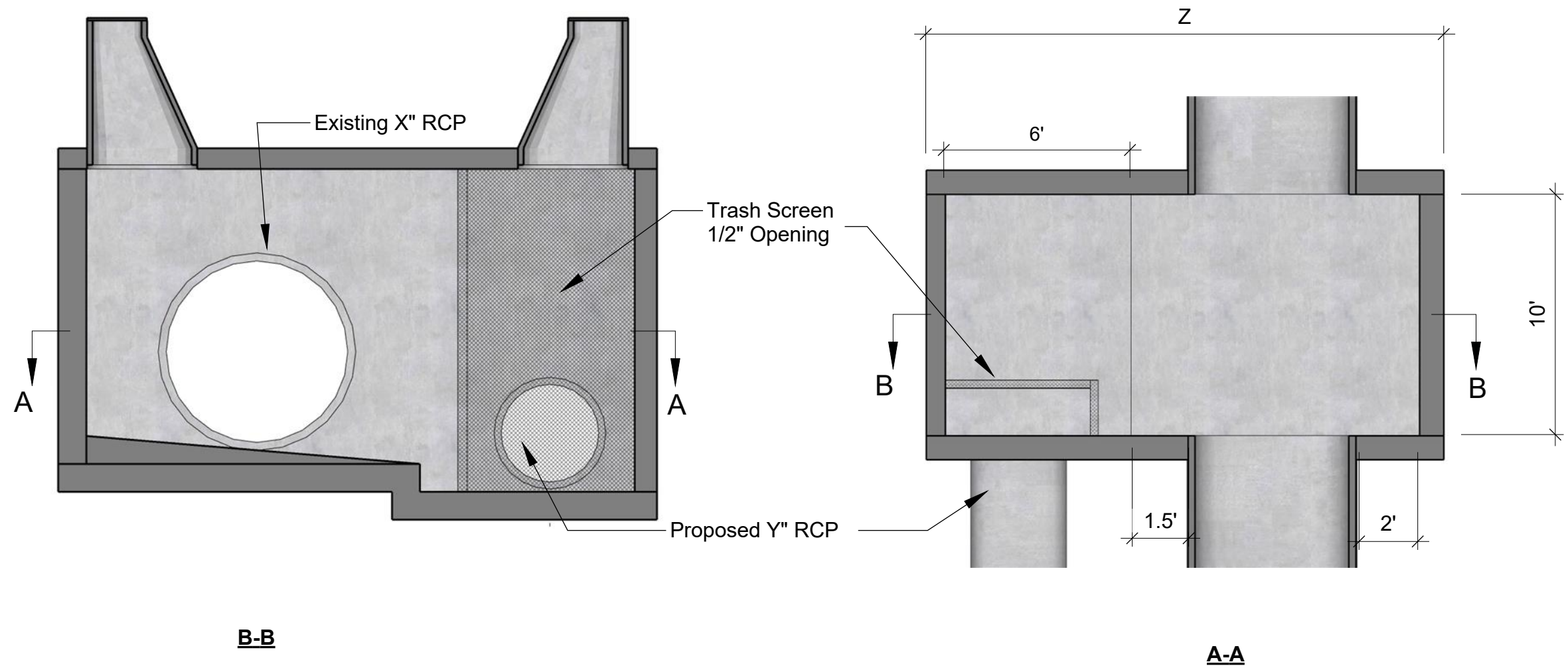


Diversion Perspective



Metro Orange Line Water Infiltration & Quality Project  
**StormTunnel Alternative**

	MM/DD/YY	REMARKS
1	___/___/___	...
2	___/___/___	...
3	___/___/___	...
4	___/___/___	...
5	___/___/___	...



DIVERSION ID	SD INV. BG	85 <sup>th</sup> P. Storm Q <sub>max</sub> , CFS	DIMENSIONS		
			X, IN	Y, IN	Z, FT
MOL1	11.00	31.6	81	30	17
MOL2	26.12	65.0	96	40	19
MOL3	15.96	26.0	84	24	18
MOL4	12.91	54.4	78	40	17
MOL5	21.11	17.5	66	20	16
MOL6	N/A	9.0	24	18	13

Diversion Structure Details

**SEITec**

Metro Orange Line Water Infiltration & Quality Project  
**StormTunnel Alternative**

MM/DD/YY	REMARKS
1	...
2	...
3	...
4	...
5	...



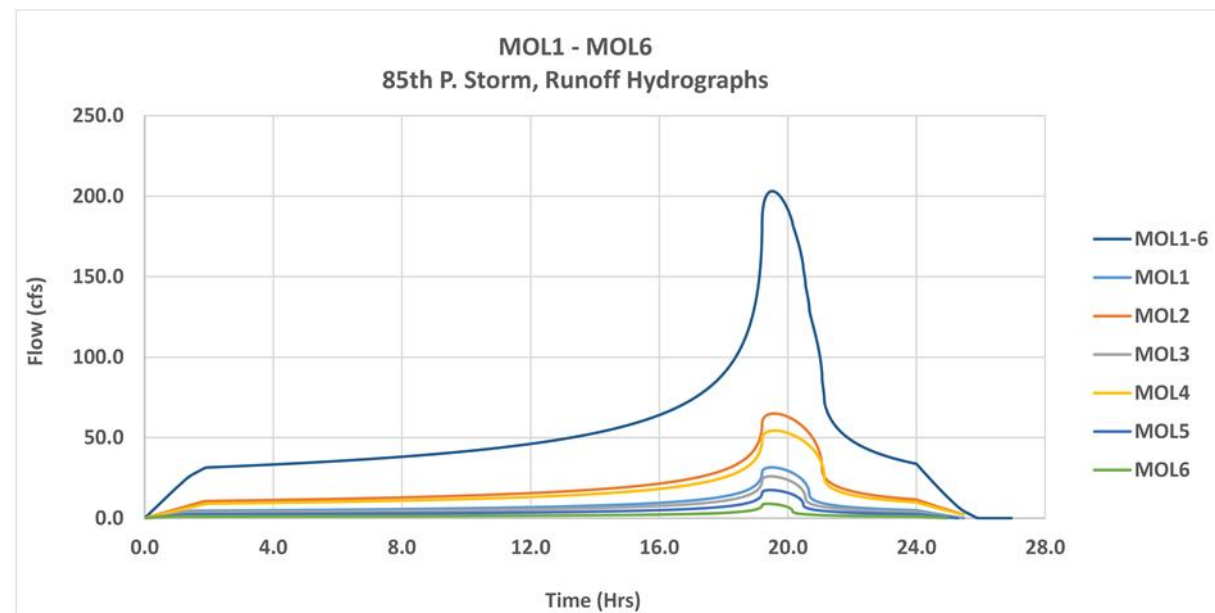


FIG 1

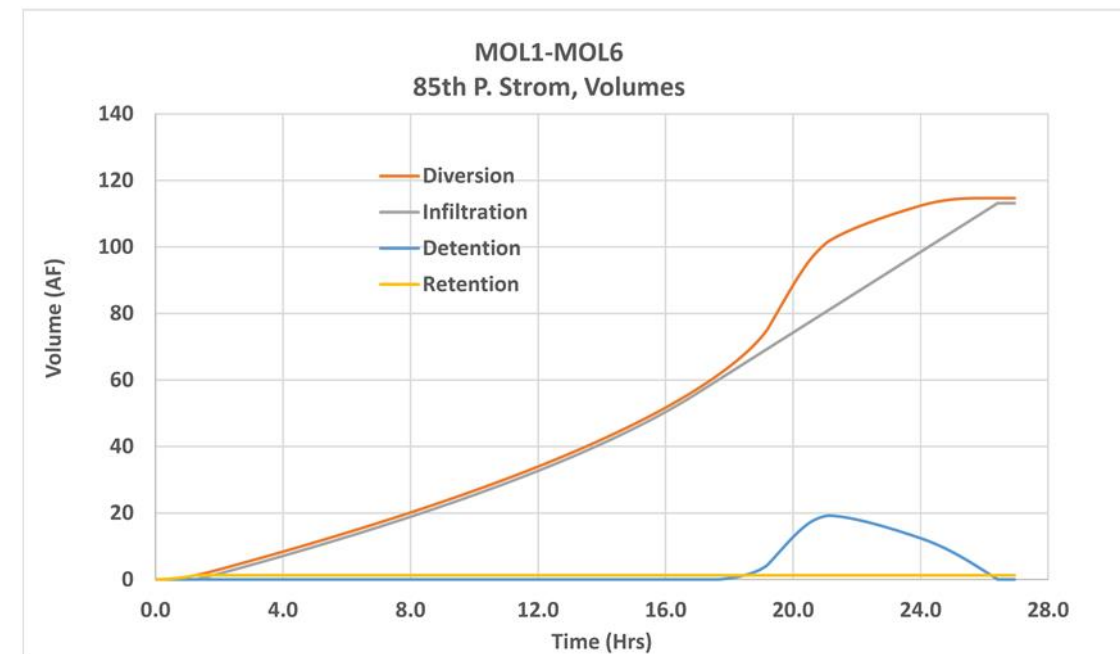


FIG 2

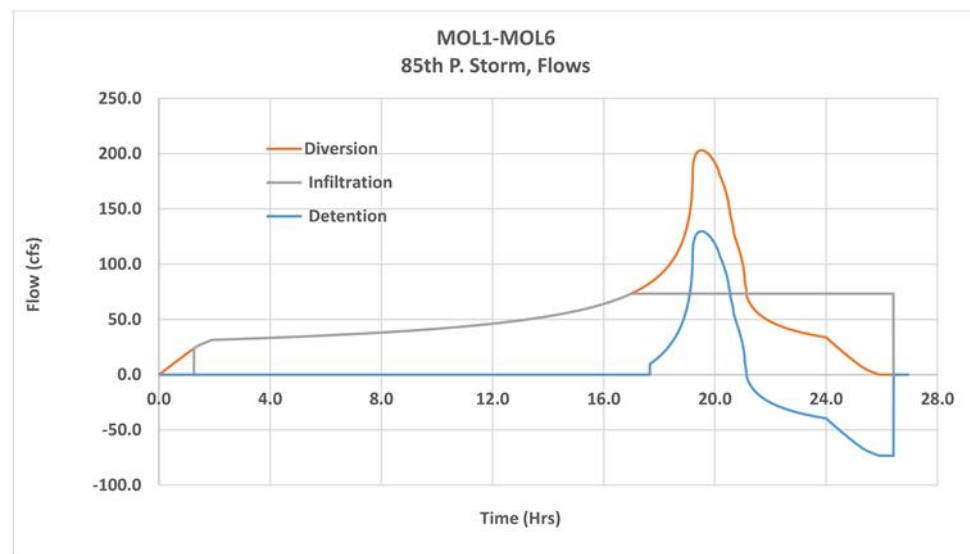


FIG 3

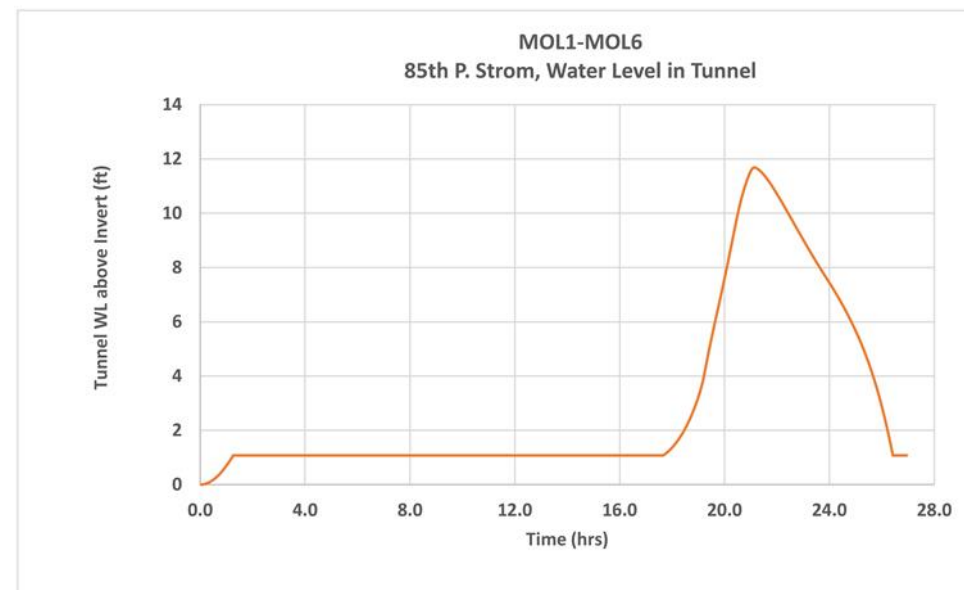


FIG 4

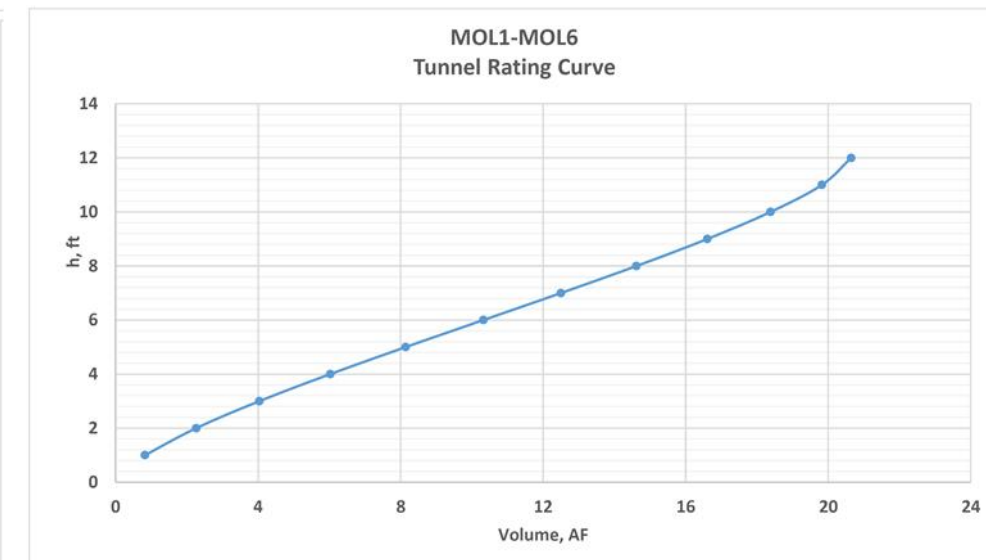
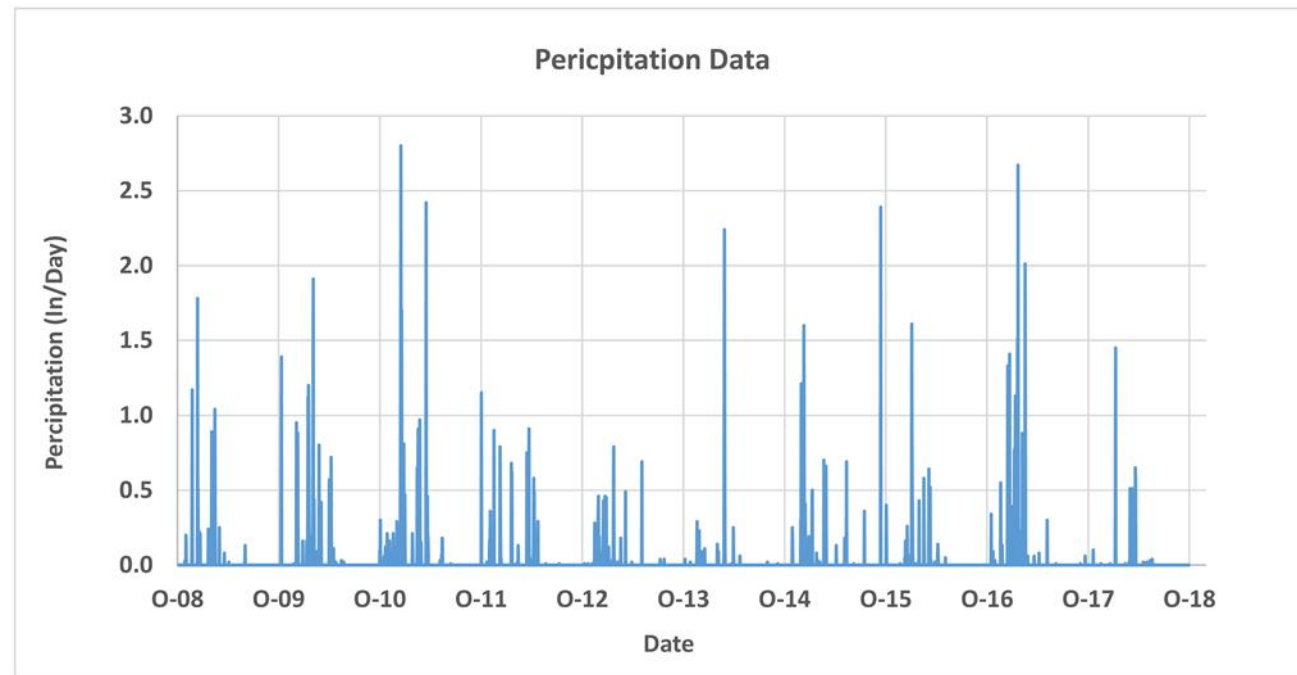
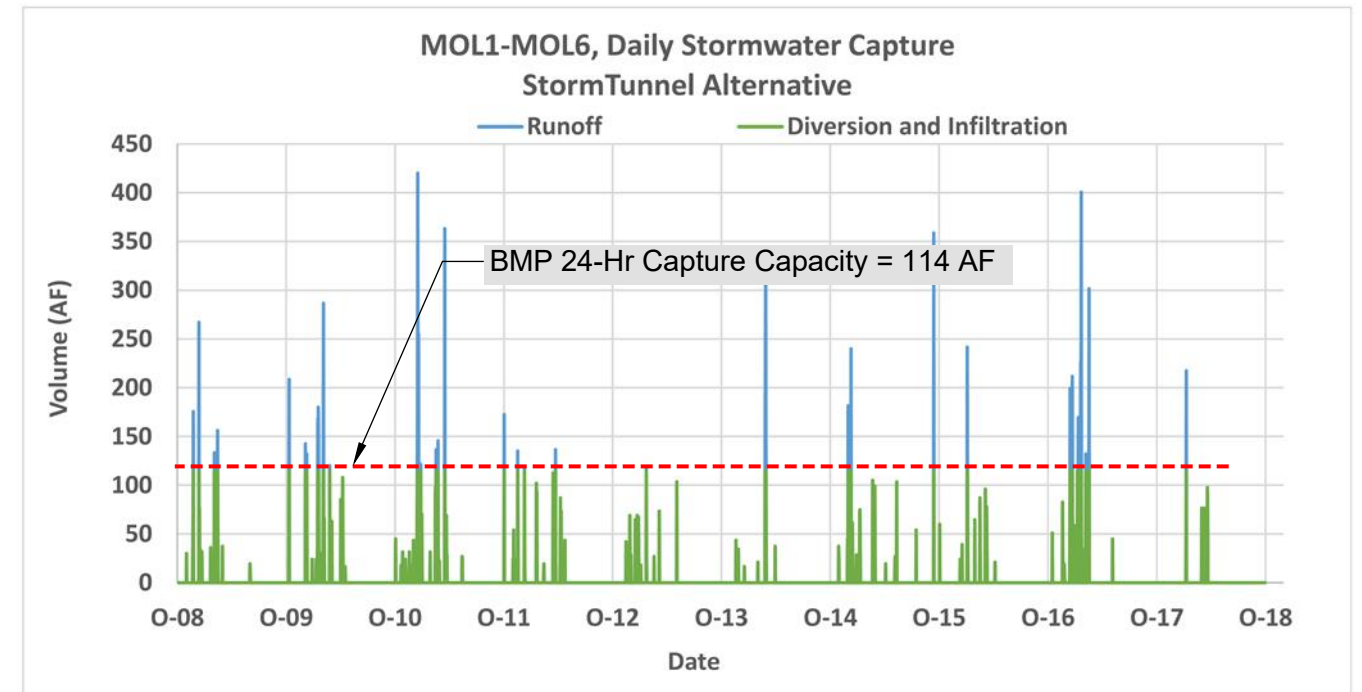


FIG 5

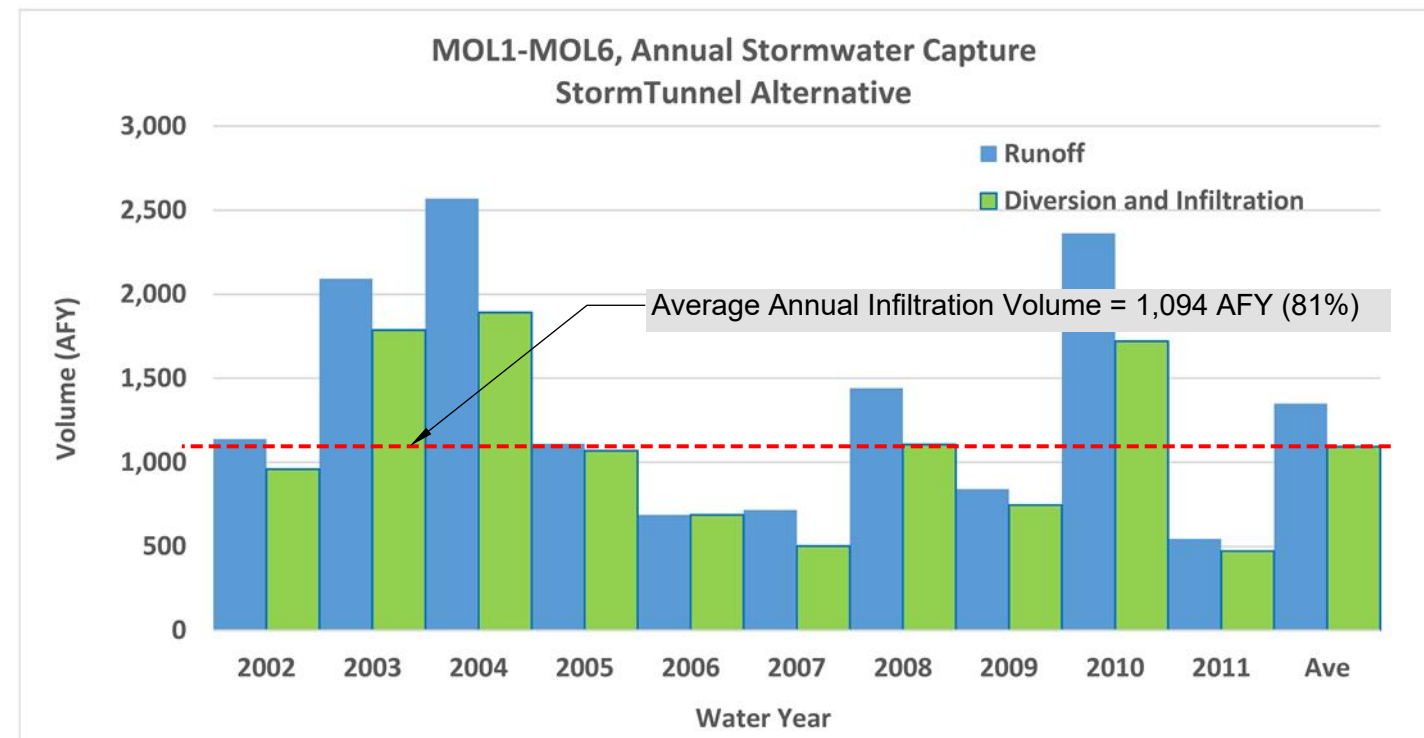
MM/DD/YY	REMARKS
1	...
2	...
3	...
4	...
5	...



**FIG 6**



**FIG 7**



**FIG 8**

MM/DD/YY	REMARKS
1	...
2	...
3	...
4	...
5	...